

CAPITAL IMPROVEMENTS UPDATE

February 2025



OVERVIEW

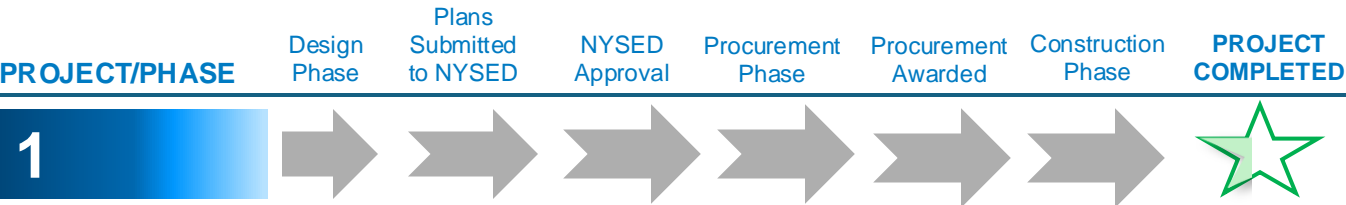
BT BOCES is improving facilities based on the BCS and Long-Range Capital Improvements Plan. Improvements are separated into two categories:

- **Capital project (November 2023 proposition)**
- Ongoing capital improvements

CAPITAL PROJECT STATUS

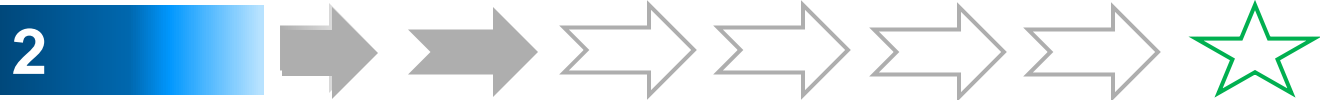
In November 2023, voters approved a \$46 million proposition for BT BOCES to undertake a **capital project** consisting of construction improvements and additions to, and reconstruction and renovation of certain buildings, facilities, and sites of BT BOCES at the Glenwood Campus.

The status for each **capital project** is provided below.



Heavy Equipment Trades Center (BOCES Technical Trades Center – BTTC)

- Anticipated substantial completion date for BTTC is April 2025
- Foundations and utilities have been installed; BTTC frame is up; work will resume in the spring to connect utilities and finish the interior
- A solar array project is anticipated near this site to support the New Energy CTE student program
- Thank you to Assemblywoman Donna Lupardo for securing grant funding for a portion of this project



Operations & Maintenance (O&M) Building

- Project paperwork submitted to NYSED November 2024
- Making provisions for a third-party review to support an accelerated timeline - construction phase anticipated March/April 2025-December 2025
- As part of this project, the existing Operations and Maintenance Building will be demolished, and a new building will be built on the South side of the main campus for the CTE addition
- A separate entrance for O&M is planned at 409 Glenwood (property purchased April 2024).
- Demolition of 409 Glenwood is anticipated February/March 2025



CAPITAL IMPROVEMENTS UPDATE

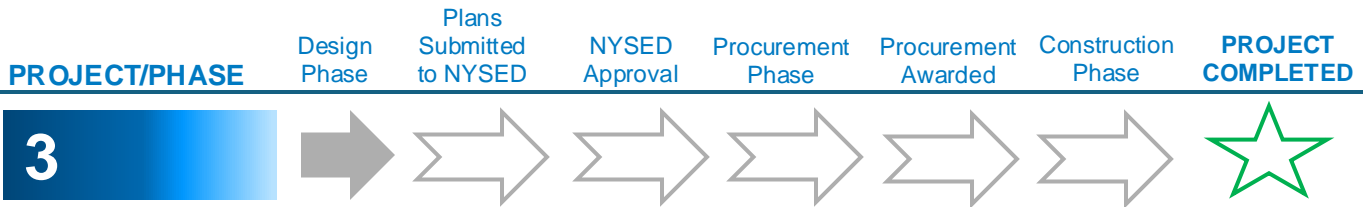
February 2025



ONGOING CAPITAL PROJECT STATUS

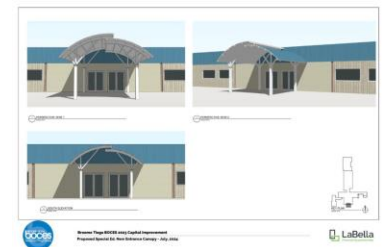
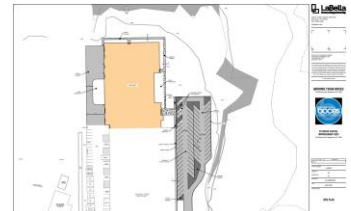
Continued from page 1 is the remaining **capital project** construction improvements and additions to, and reconstruction and renovation of certain buildings, facilities, and sites of BT BOCES at the Glenwood Campus.

The status for each **capital project** is provided below.



Education Center Addition and Renovations (including Alternates)

- Construction phase anticipated March 2026-June 2027
- Before construction begins, a key component is ensuring the disruption to student learning is as minimal as possible
- Spaces have been finalized and the architect is working on completing the construction drawings
- Soon estimating work will be done to identify and prioritize addition and renovations
- Before constructing the addition, O&M and Animal Science will need to move to their new buildings. The demolition project paperwork for the current locations of these departments was submitted to NYSED in late October
- The North side of the current Education Center building will be where the addition begins. The addition will be ~86,000 square feet, with two floors
- A key component to this project is relocating student programs to support student needs and traffic flow. At this time, the plans show Special Education Programs and Related Services will be in the 100, 200, 300, and 400 wings of the current building and the CTE and P-Tech programs will be in the 500 wing of the current building as well as the addition
- A dedicated entrance at the front of the existing building will be for Special Education Programs. CTE and P-Tech Programs will have a dedicated entrance in the front of the new addition
- It is likely there may be more than one project submitted to NYSED for this project to support the work being completed in phases



CAPITAL IMPROVEMENTS UPDATE

February 2025



OVERVIEW

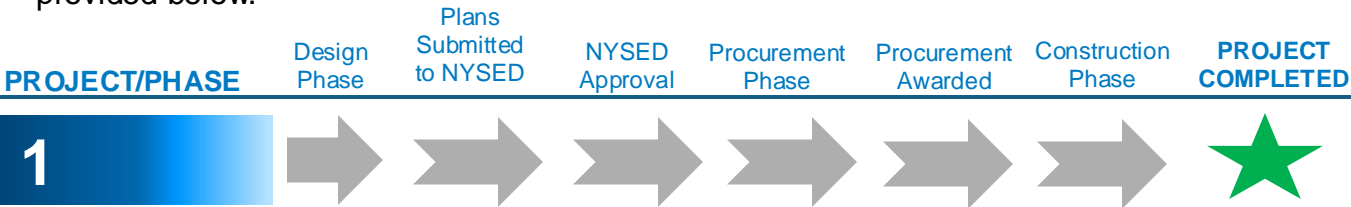
BT BOCES is improving facilities based on the BCS and Long-Range Capital Improvements Plan. Improvements are separated into two categories:

- Capital project (November 2023 proposition)
- **Ongoing capital improvements**

ONGOING CAPITAL IMPROVEMENTS STATUS

Ongoing capital improvements are identified and prioritized based on the BCS and Long-Range Capital Improvements Plan. Projects contain a balance of program related and infrastructure improvements that will be addressed over several years. Stakeholder feedback is also solicited to help prioritize the projects.

Two critical infrastructure projects **required NYSED approval**. The status for each project is provided below.



HVAC Emergency Project

- Supports the #1 priority identified in the March 2023 Employee Feedback Survey (address heating/cooling/ventilation and air quality)
- Adds supplemental heat to 100, 200 and 300 wings of the Education Center
- Supports the efficiency of the geothermal system
- Lowers the burden on the geothermal system on colder days
- Addresses critical infrastructure need identified in 2021 Building Condition Survey



COMPLETED: SEPTEMBER 2024



Electrical Emergency Project

- Construction phase anticipated October 2024-October 2025
- Completed conduit installation and contractors onsite this month during second shift to install conduit/wire in corridors. Most of this work is in the ceiling – ceiling tiles may be removed and put back into place
- Additional trenching will occur outside near the current CTE student entrance during Spring Break week
- Addresses critical infrastructure need identified in 2021 Building Condition Survey which includes replacing and upgrading the original 1972 service line, transformer, and switchgear (including moving to a new location)
- Increased capacity to support additional square footage from the capital project



CAPITAL IMPROVEMENTS UPDATE













February 2025



ONGOING CAPITAL IMPROVEMENTS STATUS

Additional ongoing capital improvements **that do not require NYSED approval** have been identified and prioritized based on the BCS and Long-Range Capital Improvements Plan. Projects contain a balance of program related and infrastructure improvements that will be addressed over several years. Stakeholder feedback is also solicited to help prioritize the projects.

The status for each project is provided below.

PROJECT/PHASE	Planning Phase	Construction Phase	PROJECT COMPLETED
<div>1</div> <div>Renovate Future Animal Science Location</div> <div></div> <div><ul style="list-style-type: none">As the capital project progresses, the current Animal Science building will be demolished to allow for building the addition. A new location was needed – and this new “home” is the perfect location as it allows for easy access, safe pedestrian and traffic flow, and continued indoor and outdoor space for the programThe utilities from the new O&M building will be run to the Animal Science buildings - once the utilities are in place, the Animal Science program can move to this spaceAnticipate the program will occupy this space August 2025</div>			
<div>2</div> <div>Replace Education Center Exterior Doors</div> <div></div> <div><ul style="list-style-type: none">Replace Education Center exterior doors, including the doors for the Oak Tree entranceWhere needed, replace exterior door framing as well</div>			
<div>3</div> <div>Other Projects</div> <div></div> <div><ul style="list-style-type: none">Replaced sign at West Learning CenterCompleted painting in the 300 & 400 wings of the Education CenterReplaced air conditioning units in the cafeteria pantry at West Learning CenterConstructed a 7' ramp for the stage at the Education CenterContinue to replace doors at West Learning Center</div>			

CAPITAL IMPROVEMENTS UPDATE

February 2025



COMPLETED CAPITAL IMPROVEMENTS

Below are additional completed capital improvements that **do not require NYSED approval**.

DATE COMPLETED Planning Phase Construction Phase **PROJECT COMPLETED**

Sept. 2024



Gym HVAC System Replacement



- Adds supplemental heat to 100, 200 and 300 wings of the Education Center
- Supports the efficiency of the geothermal system
- Lowers the burden on the geothermal system on colder days
- Addresses critical infrastructure need identified in 2021 Building Condition Survey

Sept. 2024



Education Center Bistro Café Drains



- Examine the Education Center Bistro Café drains to determine if there is a drainage issue
- Good news! No significant issues were found

Sept. 2024



Begin to Replace Geothermal Heat Pumps



- Begin to replace the geothermal heat pumps based on a 5-year replacement cycle

Sept. 2024



Renovate 300-Wing Bathrooms



- Update current facilities to address concerns and stakeholders needs
- As the capital project progresses, separate entrances for Special Education and Career and Technical Education are planned. This bathroom is located near the new Special Education entry

CAPITAL IMPROVEMENTS UPDATE

February 2025



COMPLETED CAPITAL IMPROVEMENTS

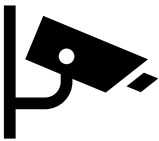
Continued from page 5 are additional completed capital improvements that **do not require NYSED approval**.

DATE COMPLETED Planning Phase Construction Phase PROJECT COMPLETED

Sept. 2024



Replace security cameras and adjust existing security camera views



- Replace security cameras at West Learning Center
- Adjust existing security camera views at the Central Business Office and Education Center

Sept. 2024



ISC Parking Lot



- Close off one entrance to the parking lot to streamline bus traffic flow from Glenwood Road
- Widen the parking lot entrance and rework the parking lot to allow for maximizing parking spaces and efficiency in maintaining the parking lot during inclement weather
- Once all significant projects on campus are completed, we will work on bringing back the BOCES mile – stay tuned!

Sept. 2024



Replace ISC hallway interior doors



- Replace ISC interior doors (hallway area)

Oct. 2024



Relocate Playground



- The current location of the playground in front of the Education Center was relocated to the West Side of the Education Center (courtyard between the 300-wing and Gymnasium) to allow for the new Special Education programs entrance to be constructed. Will blacktop the previous playground location into parking spaces
- Includes new turf and playground equipment